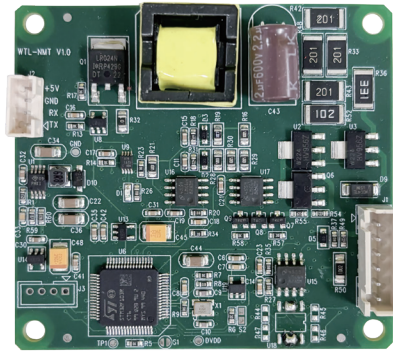


MNMT Module

Monitoring a neuromuscular blocking agent involves stimulating the neural pathway which facilitates the contraction of an appendage.

Based on the relative strength of contraction which is the result of a stimulus of specific intensity or waveform, it is possible to draw conclusions about the efficacy of an injected neuromuscular blocking agent.



Dimension : 80mm*65mm*1.6mm

Accelerometer Placement:

The tri-axial accelerometer should be attached to the contracting appendage of the patient, to measure the strength of the contraction resulting from the applied electrical stimulus.

Accelerometry is used in Train-of-Four (TOF), Double Burst (DBS), Post Tetanic Count (PTC), Supra Maximal Current (SMC) and Auto modes to facilitate monitoring of the efficacy of the neuromuscular blocking agent.



Single Stimulus vs. Repeated Stimulation:

- The repeat mode can be activated by setting the burst counter to greater than 1.
- The device will automatically start a countdown according to the 'refractory timer' or 'repeat timer' setting depending on the configured settings for the current mode.
- Disable the repeat mode by sending the stop stimulation command.

Capabilities Overview

Supported NMT Stimulation Modes

- Train Of Four (TOF)
- Post Tetanic Count (PTC)
- Tetanus (TET)
- Double Burst (DBS 3.3)
- Twitch (TWI)

Automated Workflow Sequences

- Supra-Maximal Current Determination
- Depth of Block Determination



Indicators, Warnings & Alerts

- Stimulation Busy Status
- Cable Connected Status
- Open/Closed Circuit Electrode Status
- Current Error Warning

Module Specifications

NMT Specifications		
Stimulation output	Pulse width	200us Measurement error : $\pm 5\%$
	Stimulus current range	0mA-60mA, setting step 5mA Measurement error : $\pm 1\text{mA}$
	Maximum skin impedance	5k Ω
ST mode	ST-Ratio	0%~200%.
	Measurement interval	Manual, 15s, 30s, 1min, 2min, 5min
TOF mode	TOF-Count	0~4
	TOF-Ratio	5%~160 %.
	Measurement interval	Manual, 15s, 30s, 1min, 2min, 5min
PTC mode	PTC-Count	0~15
	Measurement interval	Manual, 15s, 30s, 1min, 2min, 5min
DBS mode	DBS-Count	0~2
	DBS-Ratio	5%~160%
	Measurement interval	Manual, 15s, 30s, 1min, 2min, 5min
TET mode	Measurement interval	Manual, 15s, 30s, 1min, 2min, 5min
NMT alarm	Lead shedding / excessive stimulation current	

Accessories

Name	Image
NMT cable	
NMT Electrode sheet	

* The data is subject to change without notice. Please refer to the manual for the contraindications and precautions